

Southend Pyramid / Southend Citgo Service Station

399 Orange Road, Montclair, New Jersey



Sonya Ward, LSRP

Practice Leader - Environmental Services

Parsippany, New Jersey

sward@h2m.com

Jason Potosnak

Project Scientist

Parsippany, New Jersey

jpotosnak@h2m.com



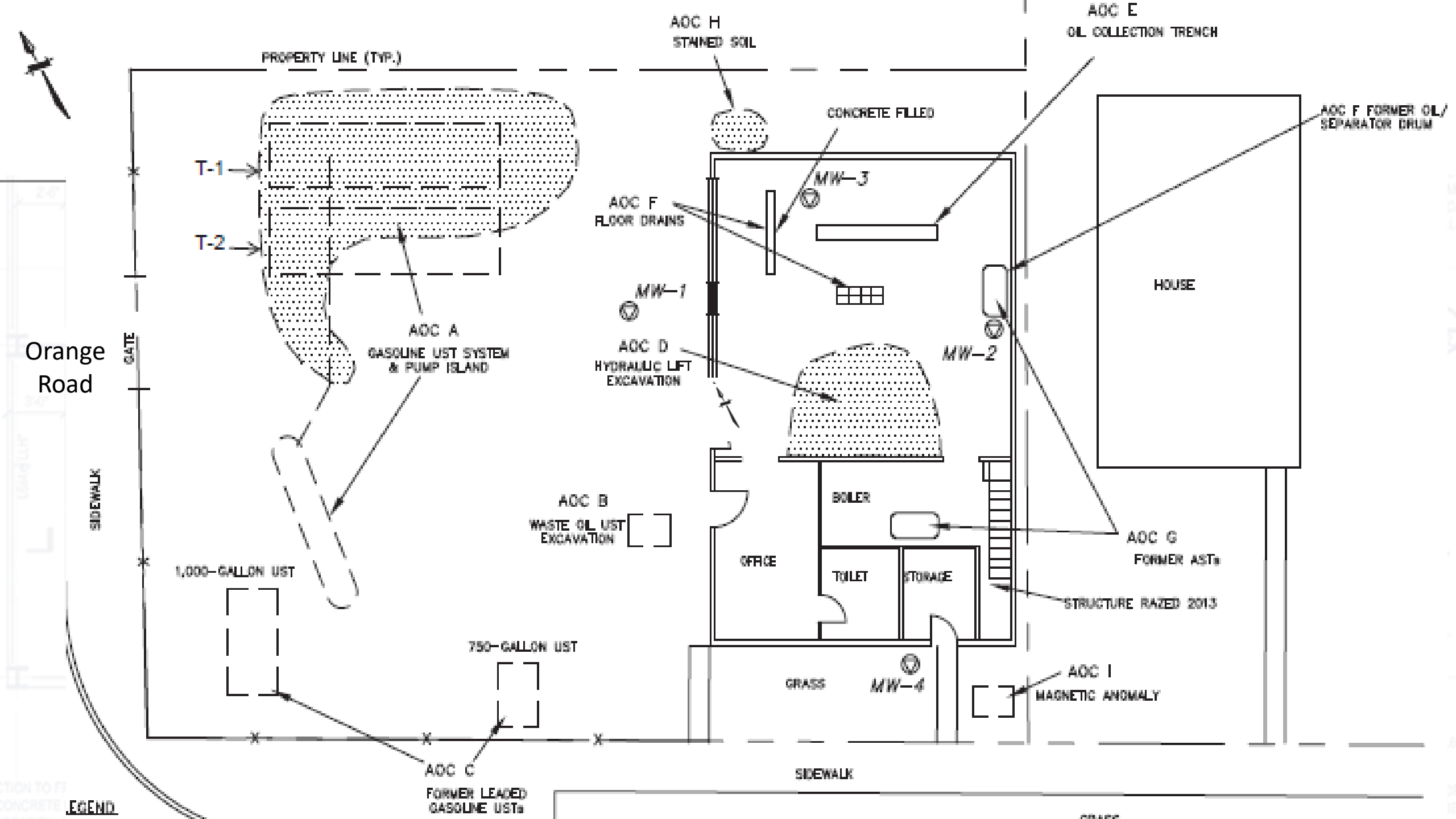
architects + engineers
practical approach. creative results.

Service Station

- Active 1986-2002
- Inactive since 2002

Property now
designated for future
public use







architects + engineers
practical approach. creative results.

Service Station Interior

- Floor Drains
- Collection
Trenches
- Hydraulic Lift and
Soil Area excavated
2004





FLOOR DRAINS

- Collected fluids in work area
- Drained to collection drum



COLLECTION TRENCHES

- Collected fluids spilled in work area
- Drained to collection drum



architects + engineers
practical approach. creative results.

Service Station Building Demolished in 2013



Oil Collection Drum

- **Below Building Floor**
- **Floor drains and trenches lead to drum**
- **Excavated, sampled, and replaced with clean soil in May 2017**





architects + engineers
practical approach. creative results.

Location of Underground Storage Tanks (USTs) and Pump Island





architects + engineers
practical approach. creative results.

Removal of USTs

- Two gasoline USTs, pump island, and waste oil UST removed - 2000
- Two additional gasoline USTs found and removed - 2015





architects + engineers
practical approach. creative results.

Investigation Completed

- **Groundwater**

- Installed three shallow groundwater monitoring wells
- Installed one deeper groundwater monitoring well
- Groundwater flows south, only VOC compounds present on-site

- **Vapor Intrusion**

- Groundwater samples compared to standards – no exceedances

- **Soil**

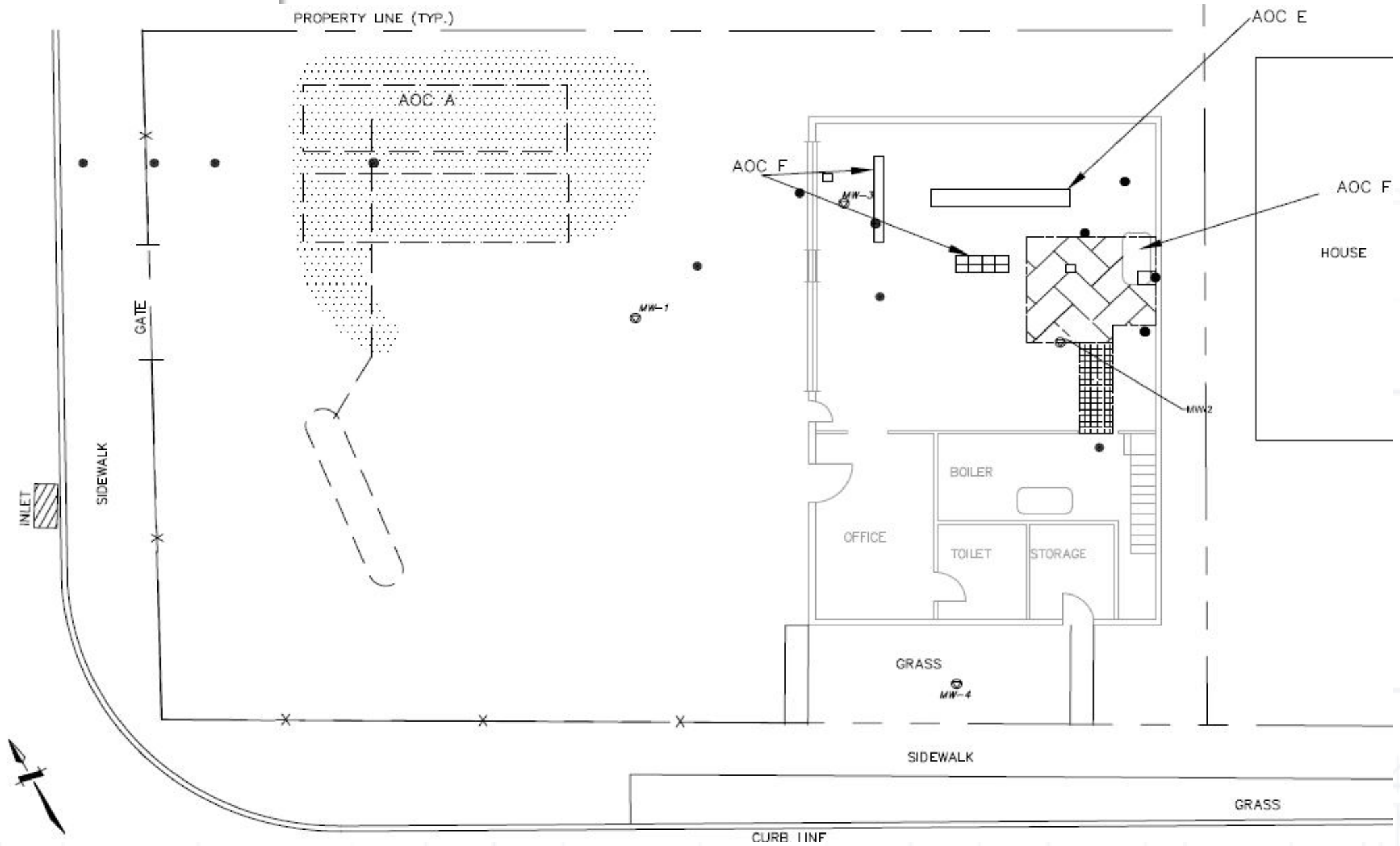
- There are only three areas that require additional sampling

Additional Investigation

- AOC-A Former Gasoline UST Area
 - Soil Sampling in the area of the two 5,500-gallon USTs
- AOC-E Oil-Collection Trench Area
 - Soil sampling in and near the building footprint
- AOC-F Floor Drain Area
 - Soil sampling in and near the building footprint



ORANGE ROAD



Additional Soil Boring Locations



architects + engineers
practical approach. creative results.

Next Steps for Cleanup

- NJEDA Funding Received
- Complete Additional Investigation
- Prepare Report and Remedial Action Workplan
 - Work with Park Designers to Combine Remediation with Park Plan
- Request NJEDA Funding to Complete Remediation
- Complete Site Remediation and Park Redevelopment
- Final Reporting and Issue Response Action Outcome
- Continued Post-Remediation Care Monitoring



architects + engineers

Thank you for your time.

Any Questions?